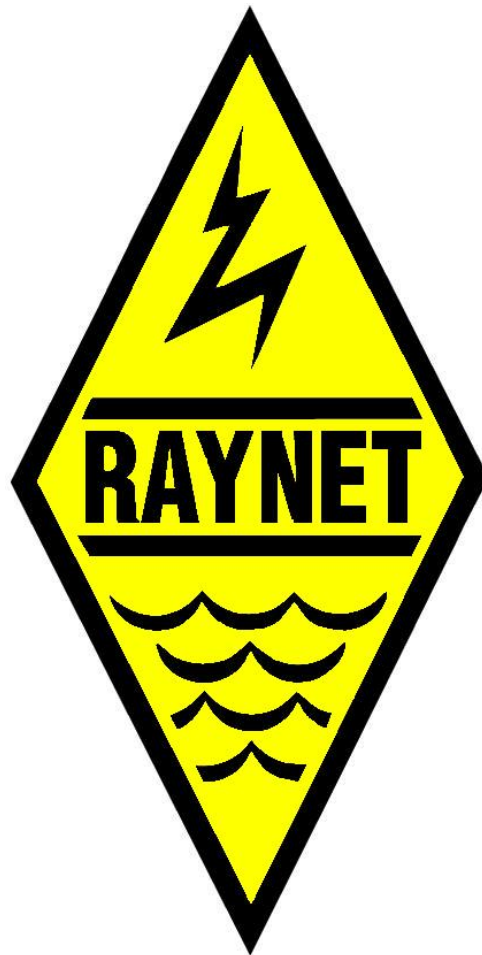




Essex Raynet Callout plan for Coastal Flooding





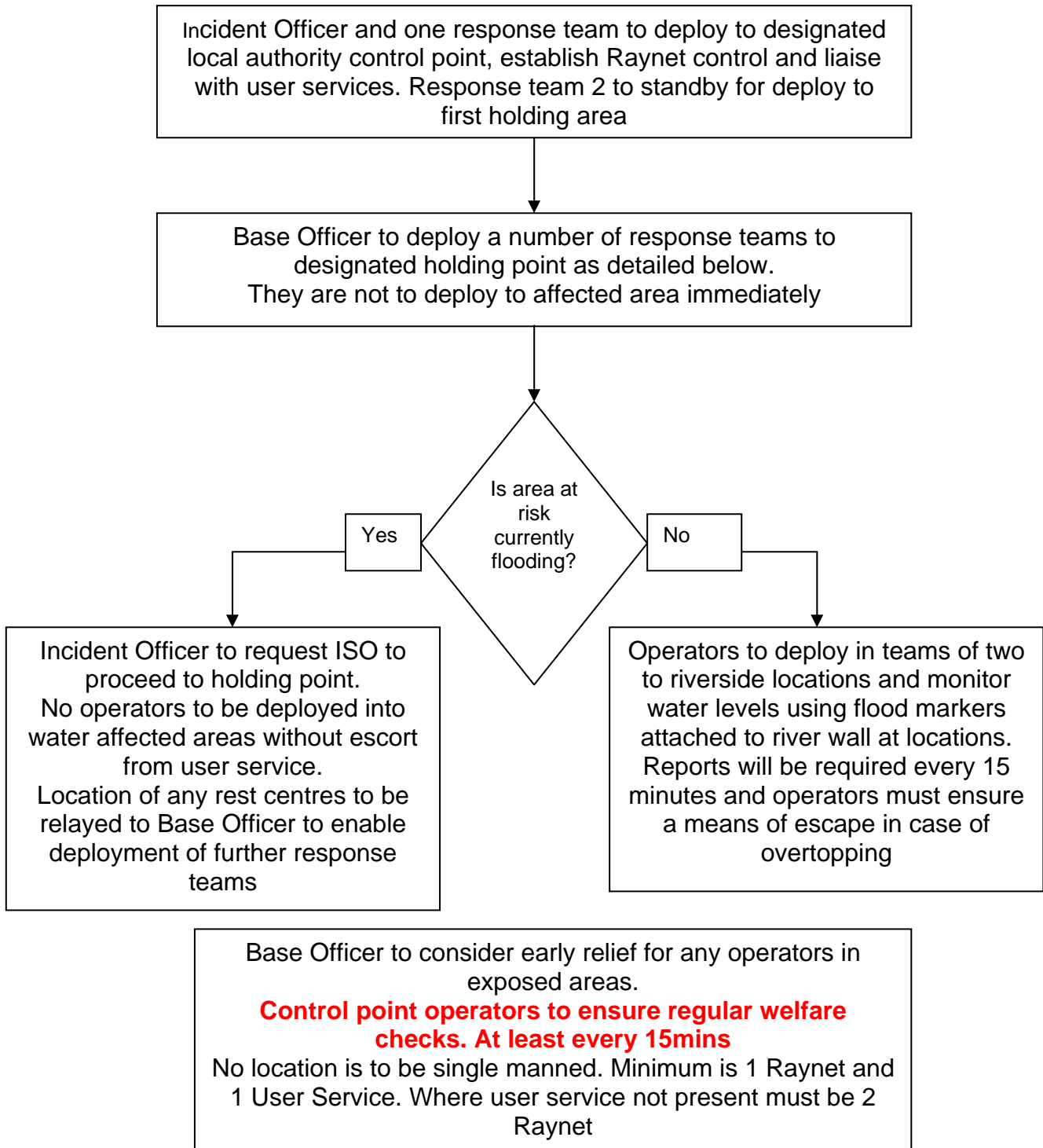
Contents

Coastal flooding callout plan	3
Predefined flood situation holding points	4
General callout plan	5
Health & Safety	6



Essex Raynet callout plan for coastal flooding

In the event that the duty controller receives a call for a floodwatch or confirmed flooding incident the following plan will be implemented. The Essex Raynet call out plan first should be followed. (see Page 3)





Essex Raynet callout plan for coastal flooding

Predefined flood situation holding points

Harwich Area – A120 Horsley Cross Roundabout (TM 1239 2740)

Clacton/Walton – McDonalds, A133 Weeley Bypass (TM1375 2240)

Colchester – Mcdonalds, Tollgate, Off A1124/A12 junction (TL9520 2445)

Maldon – Ernest Doe & Son, Ulting (TL8158 1027)

or

Oak Corner Roundabout A414 (TL8072 0472)

Dengie (Burnham/Bradwell etc) – Latchingdon Church, (TL8859 0055)

South Woodham Ferrers – Rettendon Turnpike (A130/A132) (TQ7737 9536)

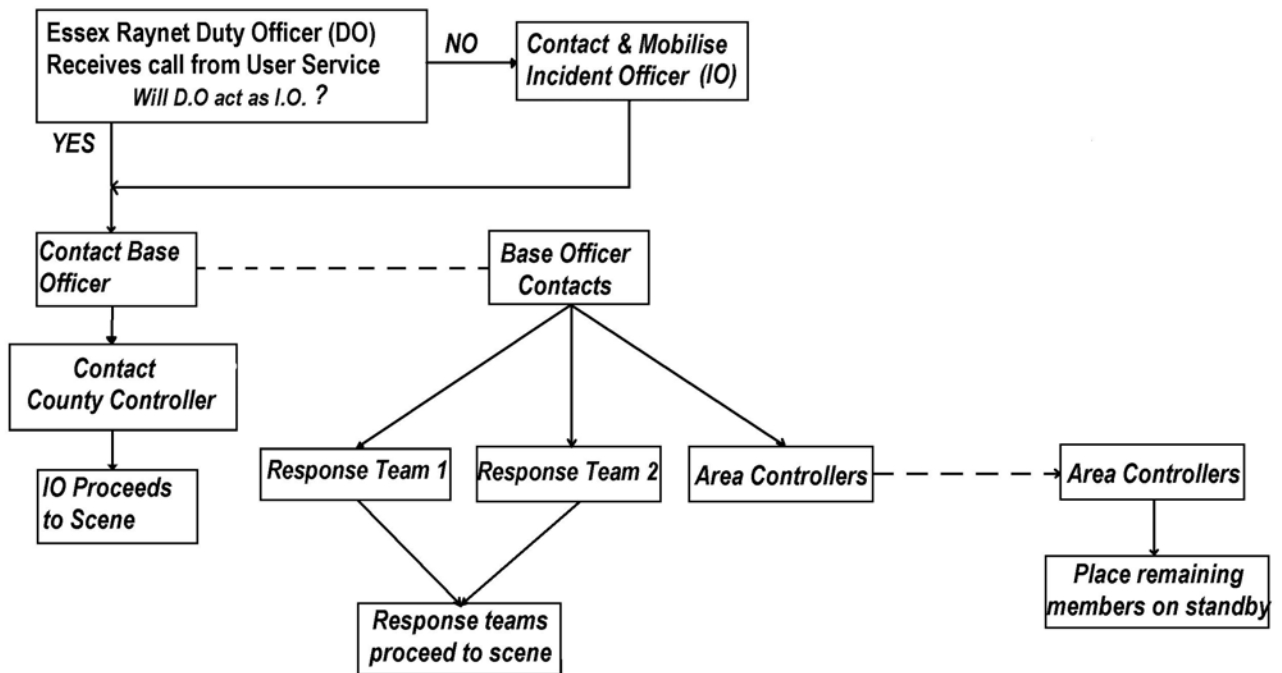
Rochford/Southend – Mcdonalds, Airport Retail Park, Southend (TQ8748 8888)

Canvey Island – Sadlers Farm Roundabout (A130/A13) (TQ7630 0852)

Thurrock – Treacle Mine Roundabout (A13/A1306) (TQ6093 7987)



Essex Raynet general callout plan





Essex Raynet Flood Plan Health & Safety

All Raynet operators are to follow the Raynet Health and safety policy

All Raynet operators must be clearly identifiable as Raynet staff at all times.

Raynet members called out to a flooding incident should bear in mind they may well encounter adverse weather conditions and should be accordingly prepared.

No Raynet members are to re-locate them selves unless

1. Personal safety is in immediate danger
2. Instructed to do so by a police officer
- 3.

If relocation is necessary control must be informed as soon as it is safe to do so.